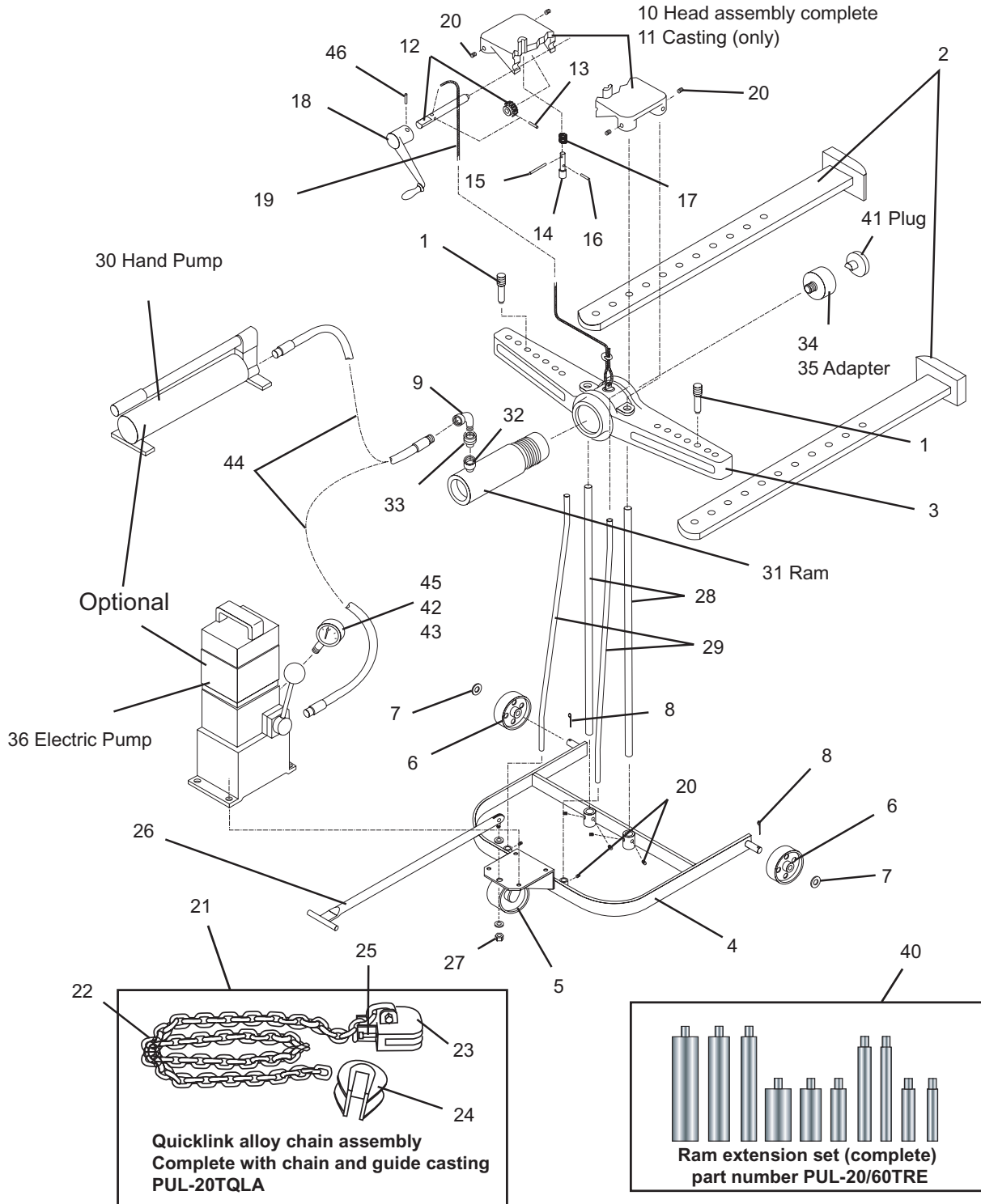


INDUSTRIAL PULLEY PULLER

20-Ton Industrial Pulley Puller Parts



P.O. Box 626 • 3575 3rd Ave. • Marion, IA 52302 • Ph: 319.447.2245 • Fax: 319.377.1204
 e-mail:sales@pulleypuller.com • Home Page: www.pulleypuller.com

INDUSTRIAL PULLEY PULLER

20-TON INDUSTRIAL PULLEY PULLER PARTS

REF NO	PART NUMBER	DESCRIPTION
	PUL-20 TON-ELPP (COMPLETE)	PORTABLE HYDRAULIC PULLEY PULLER WITH <u>ELECTRICALLY</u> OPERATED (115/60) HYDRAULIC PUMP, COMPLETE WITH QUICK-LINK CHAIN ATTACHMENT AND SET OF RAM ADAPTERS
	PUL-20 TON-PP (COMPLETE)	PORTABLE HYDRAULIC PULLEY PULLER WITH <u>MANUALLY</u> OPERATED HYDRAULIC PUMP, COMPLETE WITH QUICK-LINK CHAIN ATTACHMENT AND SET OF RAM ADAPTERS
1	PUL-20 TON PIN	BEAM PIN 20-TON
2	PUL-20TA	20-TON PULLER ARM ASSEMBLY
3	PUL-20TB	20-TON PULLER BEAM ASSEMBLY
4	PUL-20TC	20-TON CARRIAGE BASE ASSEMBLY
5	PUL-20TC-08	CASTER; SWIVEL #1450-A-4
6	PUL-20TC-09	CASTER; STATIONARY #1-5-BC-15-12
7	PUL-20TC-10	AXLE WHEEL WASHER; 20-TON
8	PUL-20TC-11	AXLE WHEEL COTTER PIN; 20-TON
9	PUL-100TR-ELBOW	3/8" STREET ELBOW
10	PUL-20TH	20-TON PULLER HEAD ASSEMBLY (COMPLETE WITH RATCHET PARTS)
11	PUL-20TH-01	MACHINED HEAD CASTING (ONLY) FOR 20-TON
12	PUL-20TH-02/03	20-TON; RATCHET SHAFT ASSEMBLY
13	PUL-20TH-04	ROLL PIN 3/16 X 1" (RATCHET PIN) #982
14	PUL-20TH-05	20 TON PAWL
15	PUL-8/20TH-6	ROLL PIN (LIFTING PIN) 3/16"DIA. X 2"
16	PUL-20TH-07	ROLL PIN (GUIDE PIN) 1/8" DIA. X 7/8"
17	PUL-8/20TH-08	SPRING; 8-TON
18	PUL-8/20TH-9	HANDLE; MACHINED, 8-TON
19	PUL-8/20TH-10	CABLE ASSEMBLY; 5/32" X 8-TON
20	PUL-20TH-12	5/16"-24 X 3/8" SET SCREW
21	PUL-20TQLA	QUICK-LINK CHAIN ASSY; 20 TON (INCLUDES GUIDE & QUICK LINK)
22	PUL-20TQLC	CHAIN ONLY 3/8" X 20 TON
23	PUL-20TQ-1	20-TON MACHINED QUICK LINK
24	PUL-20TQ-2-CA	20-TON QUICK LINK GUIDE CASTING
25	PUL-20TQ-BOLT	1/2"-13 X 4" SQ. SET SCREW
26	PUL-20TT	20-TON TONGUE ASSEMBLY
27	PUL-20TT-NUT	LOCKNUT, NYLON INSERT; 3/8" -16
28	PUL-20TU-1	UPRIGHT SUPPORT RODS
29	PUL-20TU-2	UPRIGHT BRACE ROD
30	PUL-20TR-1	HAND PUMP; HP-55
31	PUL-20TR-3	RAM; 20 TON (CSR2011)
32	PUL-20TR-4	RAM HALF COUPLER (HA-18)
33	PUL-20TR-5	COUPLER-HOSE HALF; (HA-17)
34	PUL-20TR-C	RAM ADAPTER; 20-TON
35	PUL-20TRC-ASMB	20-TON RAM ADAPTER ASSEMBLY
36	PUL-20TR-IEL	ELEC. PUMP 3-WAY (HUP-180-3RC)
37	PUL-20TR-KIT-1	REPAIR KIT; #81083 (HP-55)
38	PUL-20TR-KIT-2	REPAIR KIT; #X308-SK (HUP-180-3RC)
39	PUL-20TR-KIT-3	REPAIR KIT; #80809 (CSR2011)
40	PUL-20/60TRE	RAM ADAPTER SET; 20/60-TON
41	PUL-20/60TRP	RAM PLUG; 20/60-TON
42	PUL-HA-119	HA-119; STREET ELBOW
43	PUL-HA-120	HA-120; PIPE REDUCER
44	PUL-TR-2	HYD. HOSE X 6'-0" (HA-86-72)
45	PUL-100TR-6	10,000 PSI PRESSURE GAUGE (HA-90)
46	PUL-8/20-13	SPRING PIN (HANDLE); 3/16"X1-1/2"